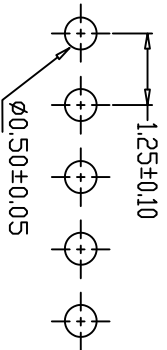
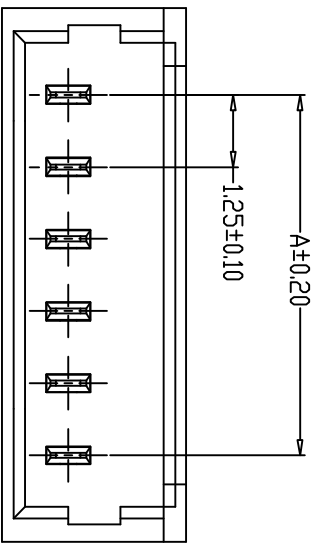
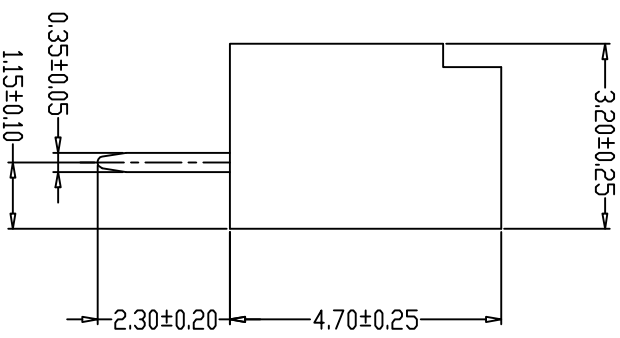
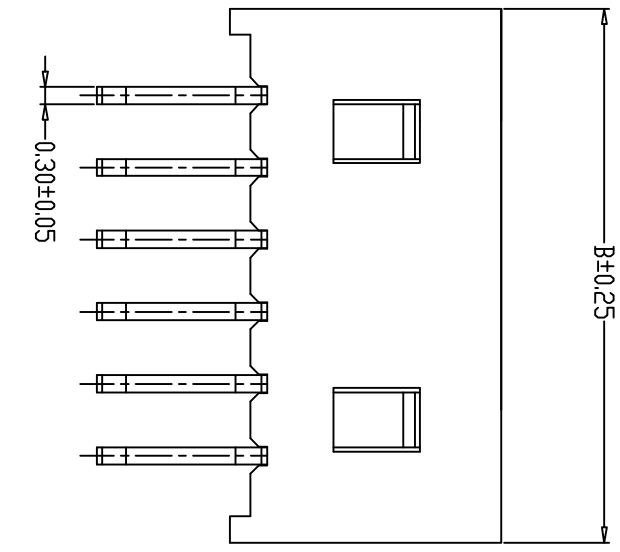


- SPECIFICATIONS**
- 1、Current Rating: 1A AC, DC
 - 2、Voltage Rating: 125V AC, DC
 - 3、Temperature Range: -25°C~+85°C
 - 4、Contact Resistance: 20mΩ Max
 - 5、Insulation Resistance: 100mΩ Min
 - 6、Withstanding Voltage: 500V AC/minute
 - 7、Material: Wafer PBT, UL94V-0
PIN Phosphoric copper Tin-plated

编 号	尺寸 (mm)	
	A	B
A1251WV1-02A	1.25	4.25
A1251WV1-03A	2.50	5.50
A1251WV1-04A	3.75	6.75
A1251WV1-05A	5.00	8.00
A1251WV1-06A	6.25	9.25
A1251WV1-07A	7.50	10.50
A1251WV1-08A	8.75	11.75
A1251WV1-09A	10.00	13.00
A1251WV1-10A	11.25	14.25
A1251WV1-11A	12.50	15.50
A1251WV1-12A	13.75	16.75
A1251WV1-15A	17.50	20.50



PCB LAYOUT

	单位 UNIT	mm	深圳市泰华电子有限公司 TaiHua Electronics Co., Ltd		
	比例 SCALE		版本: VERSION	1.25英寸间距	
X.±0.5	X*±		核准: APPROVED BY		
.X±0.30	X*±		审核: CHECKED BY	1/1	产品编号 Product No.
.XX±0.20	.XX*±		制图: DRAWN BY	日期: DATE	客户编号 Client No.
.XXX±0.005	.XXX*±		封文辉	2022.8.31	